

**PROGRAMMING & PROJECTS
EXECUTIVE COMMITTEE
MEETING**

MONDAY, JANUARY 14, 2019

2:00 PM

**TAM CONFERENCE ROOM
900 FIFTH AVENUE, SUITE 100
SAN RAFAEL, CALIFORNIA**

AGENDA

1. Chair's Report (Discussion)
2. Commissioners Comments (Discussion)
3. Executive Director's Report (Discussion)
4. Open time for public expression, up to three minutes per speaker, on items not on the Board of Commissioners' agenda. (While members of the public are welcome to address the Board, under the Brown Act, Board members may not deliberate or take action on items not on the agenda, and generally may only listen.)
5. Approval of Meeting Minutes from July 9, 2018 (Action) - [Attachment](#)
6. Marin Commutes Program Launch (Discussion) - [Attachment](#)
7. Upper Deck Third Lane on Richmond-San Rafael Bridge (Action) - [Attachment](#)
 - a. Approve Position Letter to BATA
 - b. Approve Request Letter to Caltrans
 - c. Approve Reallocation of Funding for Traffic Study
8. Measure B, Vehicle Registration Fee – Element 3.3 Alternative Fuel Program FY 2018/2019 Adoption (Action) - [Attachment](#)



900 Fifth Avenue
Suite 100
San Rafael
California 94901

Phone: 415/226-0815
Fax: 415/226-0816

www.tam.ca.gov

Belvedere
James Campbell

Corte Madera
David Kunhardt

Fairfax
John Reed

Larkspur
Dan Hillmer

Mill Valley
Stephanie Moulton-Peters

Novato
Eric Lucan

Ross
P. Beach Kuhl

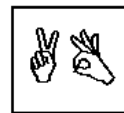
San Anselmo
Brian Colbert

San Rafael
Gary Phillips

Sausalito
Ray Withy

Tiburon
Alice Fredericks

County of Marin
Damon Connolly
Katie Rice
Kathrin Sears
Dennis Rodoni
Judy Arnold



Late agenda material can be inspected in TAM's office between the hours of 8:00 a.m. and 5:00 p.m.
TAM is located at 900 Fifth Avenue, Suite 100, San Rafael.

The meeting facilities are accessible to persons with disabilities. Requests for special accommodations (assisted listening device, sign language interpreters, etc.) should be directed to Denise Merleno at 415-226-0820 or email: dmerleno@tam.ca.gov, **no later than 5 days** before the meeting date.