

TRANSPORTATION AUTHORITY OF MARIN  
BOARD OF COMMISSIONERS MEETING

DECEMBER 19, 2019

6:00 P.M.

MARIN COUNTY CIVIC CENTER, ROOM 330  
3501 CIVIC CENTER DRIVE, SAN RAFAEL, CALIFORNIA



900 Fifth Avenue  
Suite 100  
San Rafael  
California 94901

Phone: 415/226-0815  
Fax: 415/226-0816

[www.tam.ca.gov](http://www.tam.ca.gov)

**Belvedere**  
James Campbell

**Corte Madera**  
David Kunhardt

**Fairfax**  
John Reed

**Larkspur**  
Dan Hillmer

**Mill Valley**  
Stephanie Moulton-Peters

**Novato**  
Eric Lucan

**Ross**  
P. Beach Kuhl

**San Anselmo**  
Brian Colbert

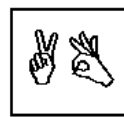
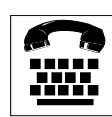
**San Rafael**  
Gary Phillips

**Sausalito**  
Susan Cleveland-Knowles

**Tiburon**  
Alice Fredericks

**County of Marin**  
Damon Connolly  
Katie Rice  
Kathrin Sears  
Dennis Rodoni  
Judy Arnold

**MEETING CANCELLED**



Late agenda material can be inspected in TAM's office between the hours of 8:00 a.m. and 5:00 p.m.  
The TAM Office is located at 900 Fifth Avenue, Suite, 100, San Rafael.

The meeting facilities are accessible to persons with disabilities. Requests for special accommodations (assisted listening device, sign language interpreters, etc.) should be directed to Denise Merleno, 415-226-0820 or email: [dmerleno@tam.ca.gov](mailto:dmerleno@tam.ca.gov) **no later than 5 days** before the meeting date.

The Marin County Civic Center is served by several bus lines including Marin Transit Routes 45, 45K, 49, 233, and 259. Route 45 provides service to the Civic Center Hall of Justice Arch until 8:43 PM. In the evening, Golden Gate Transit provides service until 11:24 PM with routes 70 and 80 along Highway 101 from the San Pedro Road bus pads, which are about a half mile away. To access the San Pedro bus pad NB, walk south down San Pedro Rd and take the footpath to the NB 101 onramp where the bus stop is located. To access the SB pad, walk down San Pedro Rd and under the freeway, turn right on Merrydale and then take the footpath near the SB onramp to the bus pad. For arrival and departure times, call 511 or visit [www.marintransit.org](http://www.marintransit.org), or [www.goldengate.com](http://www.goldengate.com)